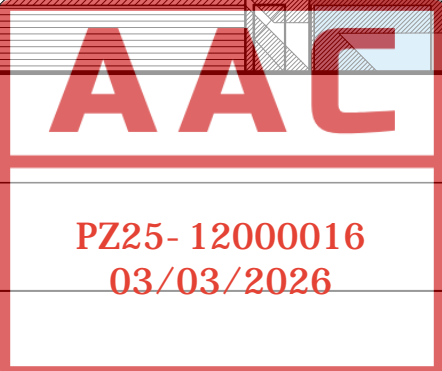
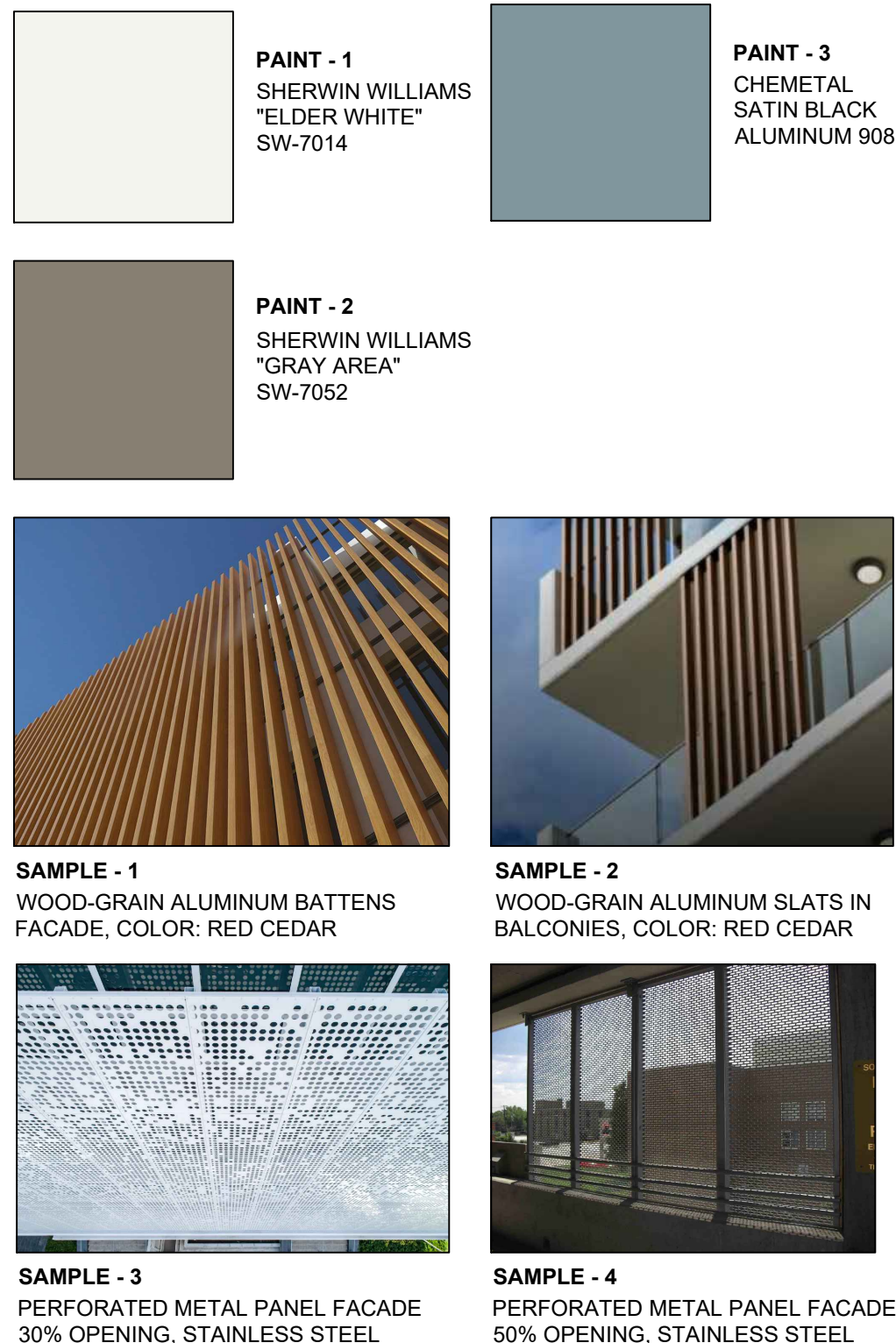


KEYPLAN - GROUND LEVEL
N.T.S.

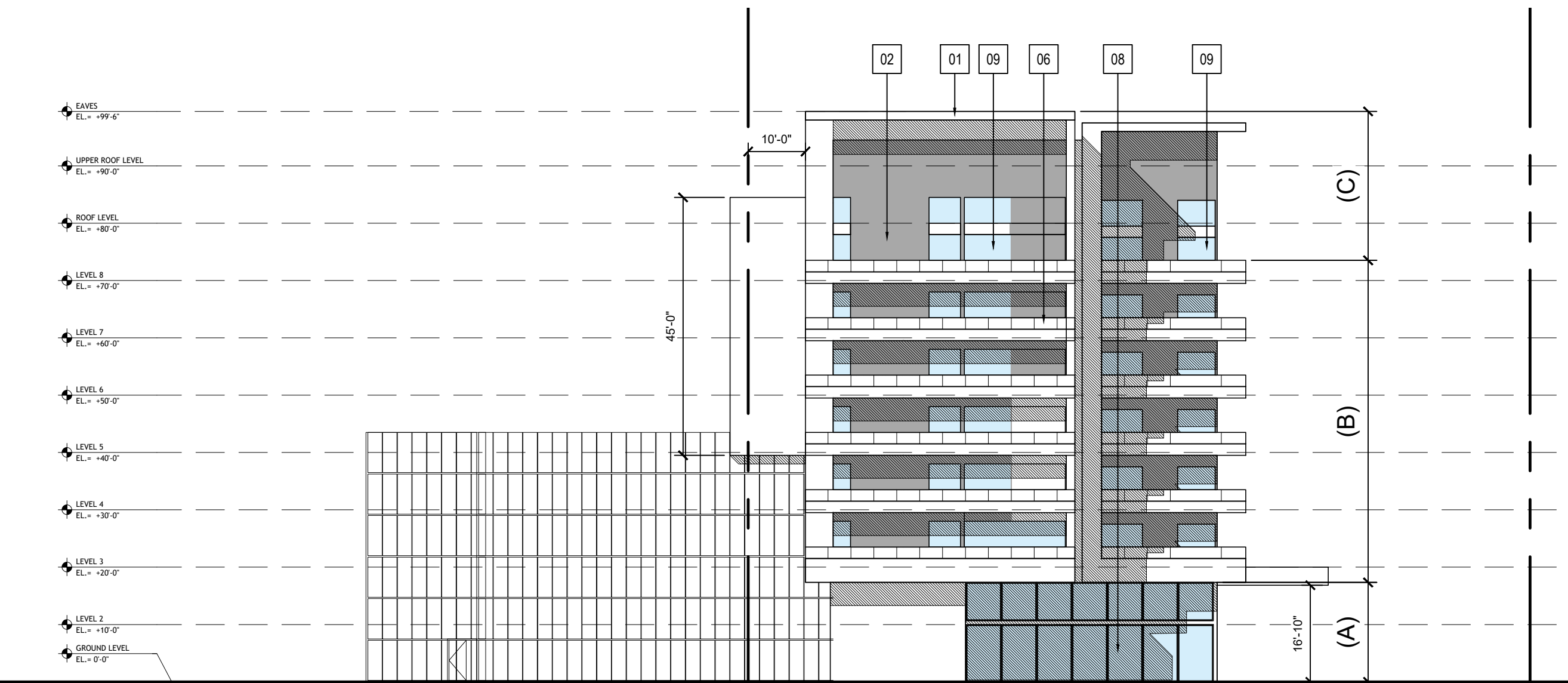
FINISH KEYNOTES

- | | |
|-----|---|
| 01 | SMOOTH STUCCO - PAINT 1 |
| 02 | SMOOTH STUCCO - PAINT 2 |
| 03 | WOOD GRAIN ALUMINUM BATT FACADE - SAMPLE IMAGE 1 |
| 04 | WOOD GRAIN ALUMINUM VERTICAL SLATS - SAMPLE IMAGE 2 |
| 05 | ALUMINUM WINDOWS-POWDER COATED DARK GREY - PAINT 3. IMPACT RESISTANT GLAZING WITH 65% LIGHT TRANSMITTANCE AND 14% LIGHT REFLECTANCE, INTERIOR AND EXTERIOR. |
| 06 | GLASS - ALUMINUM RAILING |
| 07a | STEEL PERFORATED PANEL, 50% OPENING - SAMPLE 3 |
| 07b | STEEL PERFORATED PANEL, 30% OPENING - SAMPLE 4 |
| 07c | OPENING IN STEEL PERFORATED PANEL FACADE |
| 08 | ALUMINUM STOREFRONT WITH INTEGRATED DOORS-POWDER COATED DARK GREY - PAINT 3. IMPACT RESISTANT GLAZING WITH 65% VISIBLE LIGHT TRANSMITTANCE AND 14% VISIBLE LIGHT REFLECTANCE, INTERIOR AND EXTERIOR |
| 09 | ALUMINUM SLIDING GLASS DOORS-POWDER COATED BLACK. IMPACT RESISTANT GLAZING WITH 65% VISIBLE LIGHT TRANSMITTANCE AND 14% VISIBLE LIGHT REFLECTANCE, INTERIOR AND EXTERIOR. |

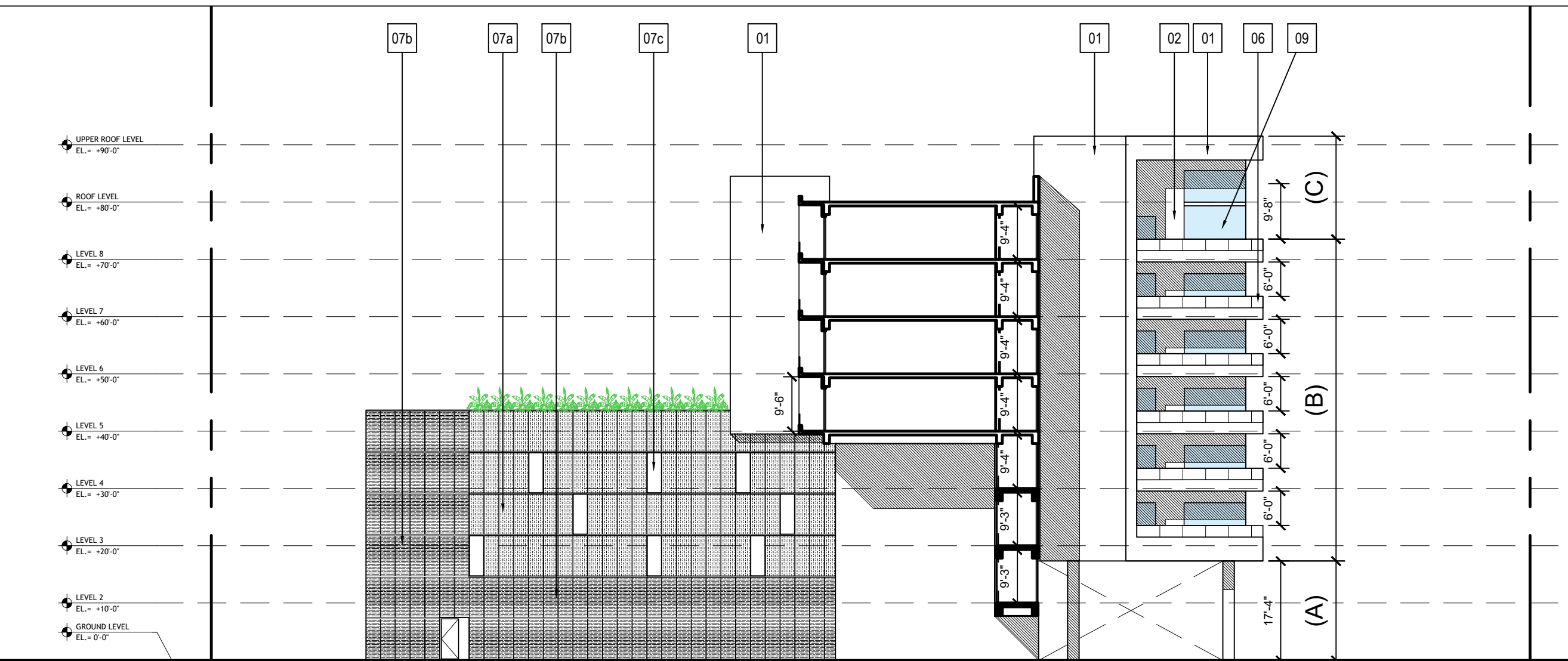
FINISHES AND COLORS



SECTION 3
SCALE: 1"=20'-0"



SECTION 2
SCALE: 1"=20'-0"



SECTION 1
SCALE: 1"=20'-0"

